

# *Fossil Replicas*

Summer, 2016

The Palm Beach Museum of Natural History, Inc.,  
2805 East Oakland Park Blvd., Suite 402 Ft. Lauderdale FL 33306

P: (561) 729-4246      F: (954) 847-9711

**WWW.PBMNH.ORG**

To order, call (561) 729-4246 or contact us through [PBMNH.org](http://PBMNH.org)

# The Palm Beach Museum of Natural History

## *Who We Are*

The Palm Beach Museum of Natural History is a corporate tax exempt non-profit 501(c)(3) entity established under the laws of the state of Florida. The Museum has been formed by a group of paleontologists, archaeologists, science educators, and museum professionals dedicated to the establishment of a premier regional center for the study and public presentation of the Natural History and Archaeology of Florida and the Caribbean, and other select areas. There is no formal affiliation with Palm Beach County. Scientists from the Palm Beach Museum have been actively doing field research in various locations around the world since the museum became incorporated nearly a decade ago. Our work with universities, museums, and private clients, both in Florida and elsewhere, has made us a sought-after resource for education in natural history, paleo research, traveling exhibits, and fossil replicas. In addition, our outreach program brings the museum into the classroom setting to engage students and enable them to handle rare specimens that normally would be inaccessible to them.

## *Why is our Work Exceptional?*

Typically, you will encounter either a group dedicated to science and education, or a group dedicated to producing fossil replicas and displays, but rarely both combined. Our group presents a rare opportunity, in that we are chiefly composed of active scientists and educators, in addition to offering fossil replicas, molding and casting services, and fossil preparation services. With us, you are working with a group that has extensive experience in the sciences, molding, casting, fossil preparation, excavation, mounting, sculpting, and painting.

Our scientists are actively engaged in groundbreaking research and publication in peer-reviewed academic journals, and many of their studies are changing our view of the prehistoric world. The replicas and exhibits we offer benefit tremendously from this background, and many of our products incorporate the latest, cutting-edge scientific data available.

## Services We Offer

### *Molding and Casting*

We have extensive experience in molding and casting rare and delicate fossils. The highest quality silicones and resins capture the finest detail of the fossils. After a multi-step hand-painting technique to match the original fossil, our replicas are virtually indistinguishable from the real thing. In addition

to producing fossil replicas of competitive quality, we offer custom molding services, in which we can make durable molds of your specimens.

### *Fossil Preparation, Restoration, and Mounting*

We also have decades of experience in fossil preparation, restoration, and mounting. From preparing gigantic, four-foot-long sauropod bones, to delicate micro-prepping, and acid preparation, we can handle virtually any fossil preparation job. Many times, we are the ones that take on fossil preparation jobs that few others could do, or that are rumored to be impossible. We virtually always succeed. Our skilled sculptors are also scientists who have an in-depth knowledge of anatomy and paleontology. So, restorations are not only scientifically accurate, but also visually realistic, matching the texture of the rest of the fossil.

### *Why Buy Replicas?*

Fossil replicas offer many various advantages. Original fossils can be costly to transport, and each time one is transported there is a risk of damage. Replicas are much more durable, and can be replaced if one is damaged or destroyed. The durability is also helpful when studying specimens, or teaching school groups. Researchers or students will have a chance to handle specimens that would otherwise be unavailable, either because of geographic location or the fragile nature of the fossil. When molds are made of a fossil specimen, you can also produce multiple “clones” of a particular piece for a display, such as replicating a skeleton several times to make a herd or flock of animals. This enables us to create displays with dynamic animal interactions, and experiment with poses not possible with the fragile original bones. Also, for those unable to spend a small fortune on an original skeleton, replicas offer a much more budget-friendly way of getting an impressive specimen.

### *Traveling Exhibits*

Visit <http://www.pbmnh.org/traveling-exhibits-2/> for more information

Our original skeletons, replica fossils, and up-to-date scientific knowledge, all combine into one element with our traveling exhibitions. Our exhibits are both visually pleasing and educational, incorporating new theories and groundbreaking new research.

### *Expedition Dinosaur*

*Expedition Ice Age* - Call now for details and scheduling

*Expedition Megalodon* — In progress, inquire for details

*Expedition Conquistador* — In progress, inquire for details

**\*Custom exhibitions upon request\***



# Pachycephalosaur cf. *Stegoceras*

---



Their compact build and thick, bony skulls made pachycephalosaurs the rams or bighorn sheep of their day. Not all pachycephalosaurs were large, as this little *Stegoceras* illustrates. Cast from a skeleton that is over 75% complete, our replica is of superior quality. It is more than adequate as a stand-alone exhibit, but is striking when integrated into a diorama with other skeletons.



Mounted skeleton: 4.5 feet long, 2 feet tall at hips

21254.....\$3,100

Skull only: 10 inches long

21255.....\$350



\*Inquire for prices in bronze





# Nanotyrannus lancensis

*Nanotyrannus* is the rarest and most enigmatic of the Late Cretaceous tyrannosaurids. It's sleek build, smaller size, and powerful legs made it an exceptionally agile and lethal predator. This is a sleek, highly detailed replica of a rare theropod. (By contrast, several handfuls of *T.rex* skeletons have been discovered since the days of Barnum Brown.) This beast is large enough that its fearsome nature is obvious, yet small enough to fit into virtually any venue.



Mounted skeleton: 15 feet long, 5.8 feet tall at hips  
21256.....\$43,000

Skull only: 22 inches long

21257.....\$2,650

\*Inquire for prices in bronze





## Nothosaurus sp.

Nothosaurs are a primitive relative of the familiar four-flippered plesiosaurs that gave rise to the myth of “Nessie” the Loch Ness Monster. Our monster, however, was absolutely real. As the lineage grew more

adapted to aquatic life, the limbs developed into paddles, and the

body became streamlined, as you can see in this exquisitely preserved skeleton. The most special part about this piece, is it was the first of its kind to be entirely freed from its rocky matrix and mounted three-dimensionally. The original skeleton was over 93% complete, making this the most detailed replica of its kind.



Mounted skeleton: 3.5 feet long.

21258.....\$2,100

Skull only: 6.5 inches long.

21259.....\$350

Skeleton in matrix before preparation.

21260.....\$445

\*Inquire for prices in bronze





# Sinovenator sp. Raptor



Among the most birdlike of the raptors, troodontids such as *Sinovenator* truly were “turkeys from hell”. In addition to their feathered bodies and winglike arms, they had the signature killing claw on the rear foot, and a mouth full of sharp, serrated teeth. Our replica is extremely detailed, and its skull was completely disarticulated during preparation, the elements were molded separately, and then reassembled. It is attractive both alone, in a pack, or part of a larger diorama.



Mounted skeleton: 3.5 feet long.

21261.....\$4,400

Skull only: 5 inches long.

21262.....\$350

Skeleton in matrix, 3 feet long.

21263.....\$2,300

\*Inquire for prices in bronze



# *Psittacosaurus sibiricus*

Our replica of *P. sibiricus*, the largest species of psittacosaur in the world, is both a fascinating and attractive. The robust, melon-sized skull boasts prominent spikes on the jugals and dentaries. This monster is one of the largest specimens of *P. sibiricus* ever discovered.



Mounted skeleton: 7.5 feet long,  
3.5 feet tall at hips

21264.....\$6,500

Skull only: 10 inches long

21265.....\$325

\*Inquire for prices in bronze







# *Tapejara wellnhoferi*



Available as an in-matrix presentation, this replica exhibits an associated skeleton of the enigmatic crested pterosaur *Tapejara*. Pterosaurs such as this shared the Mesozoic skies with primitive birds.

Skeleton in matrix, 2.7 foot long slab.

21266.....\$425

\*Inquire for prices in bronze

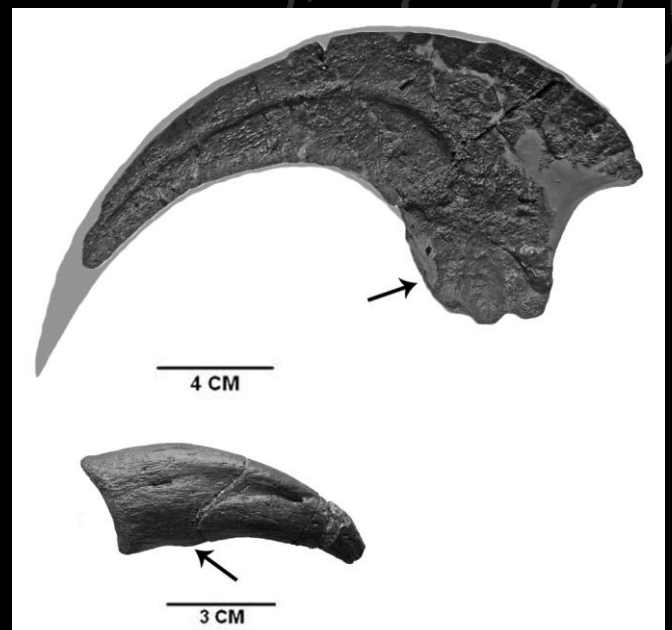




# *Dakotaraptor steini*



The scourge of the Cretaceous, *Dakotaraptor* was recently named based on a specimen from the Hell Creek Formation. It was the largest raptor in the Late Cretaceous and also the largest raptor to have evidence for wing plumage! A contemporary of *T.rex*, *Acheroraptor*, and *Triceratops*, this magnificent animal is about the same size as a *Nanotyrannus* but ten times deadlier. We suggest buying several to make a pack-hunt diorama. This is the first and only reconstruction of the whole skeleton, and is the most accurate representation of a truly remarkable predator.







© Robert DePalma 2015



Mounted skeleton, ~17 feet long. \*in-progress, available after May, 2017

21267.....\$43,500

Two or more mounted skeletons

21268.....\$33,100 apiece

Killing claw, 9 inches along curve.

21269.....\$150

Skeleton in faux matrix (coming soon)

21270.....\$32,400

\*Inquire for prices in bronze





# Dakotaraptor wing

One of *Dakotaraptor*'s most remarkable features is its powerful wing, which possessed quill knobs. These quill knobs are direct evidence for long wing plumage. The plumage was used for protecting young or hunting, as the animal was too large to fly. We offer a beautifully mounted wing of *Dakotaraptor* with removable reconstructed plumage, the only item of its kind in the world. Essential for any exhibit on raptors or flight.

## Dakotaraptor

### Wing Feathers

*Dakotaraptor* was the largest raptor with confirmed wing feathers (remiges)

Quill knobs for feather attachment match those of modern birds

Modern bird forearm, quill knobs



*Dakotaraptor* forearm, quill knobs



Mounted wing with removable plumage, ~2.8 feet long from elbow to tip.

21271.....\$5,500

\*Inquire for prices in bronze



## *Dilong paradoxus*



This incredible little theropod is one of the oldest and smallest ancestors of the behemoth *Tyrannosaurus rex*. A fierce, diminutive, and gangly predator, *Dilong* displays features reminiscent of its larger relatives. The tiny arms and robustly built skull both resemble those of the Late Cretaceous carnivores *T.rex* and *Gorgosaurus*. This is a perfect specimen for a comparative display on tyrannosaurids.



Mounted skeleton: 3.5 feet long, 1.5 feet tall at hips.  
21272.....\$4,300

Skull only: 5 inches long  
21273.....\$350

Skull in matrix, 6 inch slab.  
21274.....\$100

\*Inquire for prices in bronze





# Turtle *Plesiobaena* sp.

The Hell Creek Formation is best-known for its dinosaurs, so the abundant turtle fossils are often ignored. This is unfortunate because there are so many fascinating turtle varieties there. Offered here is the first rigorous 3D reconstruction of a juvenile *Plesiobaena* turtle. Based on original fossil material with the missing areas painstakingly restored through sculpture, this is the only 3D juvenile *Plesiobaena* skeleton on the market today! Get one or more for displays, or as food sources for dioramas with other carnivorous species!



Skeleton measures approximately X inches from head to tail.



Mounted skeleton, 6 inches long.  
21275.....\$550

Skeleton in faux matrix.

21276.....\$275

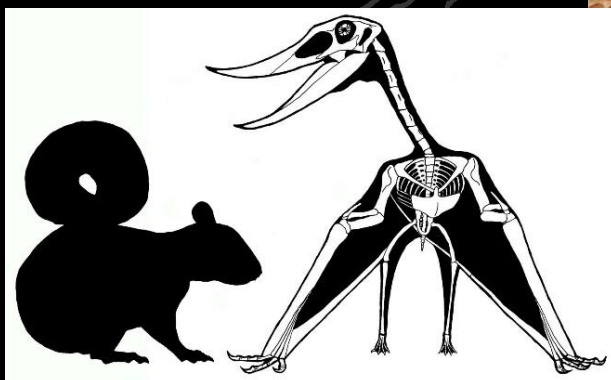
\*Inquire for prices in bronze





# Pterosaur, New Species

An extremely rare pterosaur, this is the first reconstruction of a newly discovered pterosaur from the Hell Creek Formation of South Dakota. North American pterosaur remains are very rare in general, and this is the first associated pterosaur skeleton from the Hell Creek. The replica has incredible detail, and can be mounted in a variety of poses. The original specimen is currently under research and a manuscript is in preparation.







Mounted skeleton: 4.2 foot wingspan.

21277 Standard base.....\$2,950

21278 On trackway slab.....\$3,254

Skull only: 6 inches long

21279.....\$325

In-situ presentation, 15 inch slab.

21280.....\$950

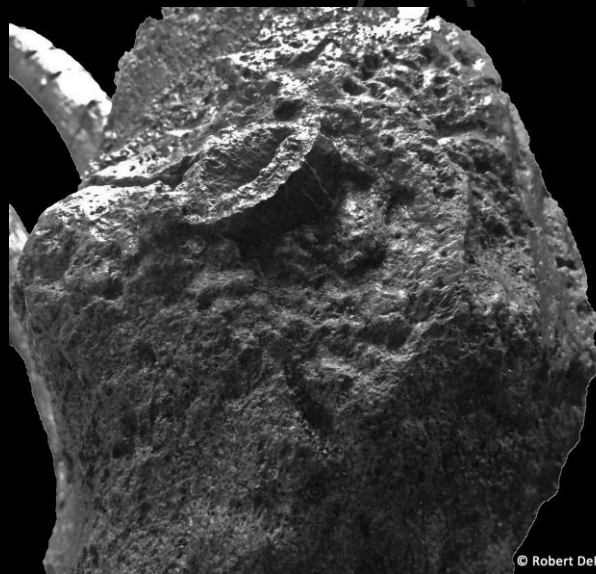
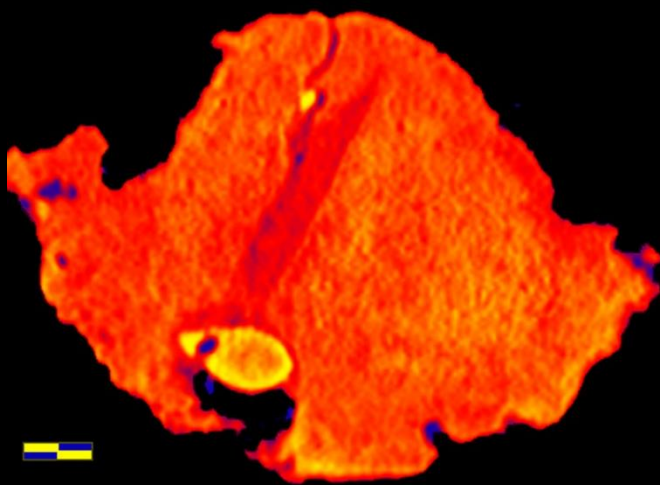
\*Inquire for prices in bronze





# T.rex Attack!

Unmistakably one of the most well-known predators of the Late Cretaceous, it was not until recently that we had unequivocal proof that *T.rex* attacked living prey animals. That proof was a set of hadrosaur vertebrae, fused by infected bone, with a *T.rex* tooth wedged inside. Recently published in the Proceedings of the National Academy of Sciences, featured on National Geographic's *T.rex Autopsy* program, and hailed by international media as the "Smoking Gun Fossil", this is the most dramatic evidence of incontrovertible *T.rex* predatory behavior! This item comes with a free reprint of the scientific paper, and additional images such as CT scans and artwork can be added to the order. A must-have for any *T.rex* or predatory dinosaur display! This is your chance to own a replica of a truly famous, world-class research fossil!



© Robert DePalma

Fused vertebrae with embedded tooth.

21281.....\$574

Digital file of additional images, CT scans, and schematics

21282.....\$42

\*Inquire for prices in bronze





## *Archaeoceratops oshimai*



It is difficult to imagine that this tiny creature is one of the oldest relatives of *Triceratops*...at least, until you see the tiny, evolving frill, beaked jaws, and wedge-shaped skull. This example of *Archaeoceratops* has one of the best preserved skulls known for the genus. This is a perfect replica for a Ceratopsian exhibit, or just on its own.

Mounted skeleton: 1.7 feet long.

21283.....\$1,500

Skull only: 3 inches long

21284.....\$325

In-situ presentation, 20 inch slab.

21285.....\$950

\*Inquire for prices in bronze



# Cretaceous bird, New Species

Cretaceous birds from the United States are rare, but this one is among the rarest – the first articulated bird remains from the Hell Creek Formation. Found beside the bones of hadrosaurs, thescelosaurs, and raptors, this is the most complete bird skeleton from the Hell Creek Formation. It is also an Ornithurine, meaning one of the first relatives of modern bird lineages. It has been painstakingly restored and reconstructed, bone-by-bone, resulting in one of the most detailed three-dimensional Cretaceous bird replicas available anywhere. A manuscript is already in preparation, and the discovery was announced at Europe's EAVP conference in 2013.







Skeleton, 12.5 inches tall.

21286.....\$2,950

Skeleton in original matrix, 8 inch slab.

21287.....\$950

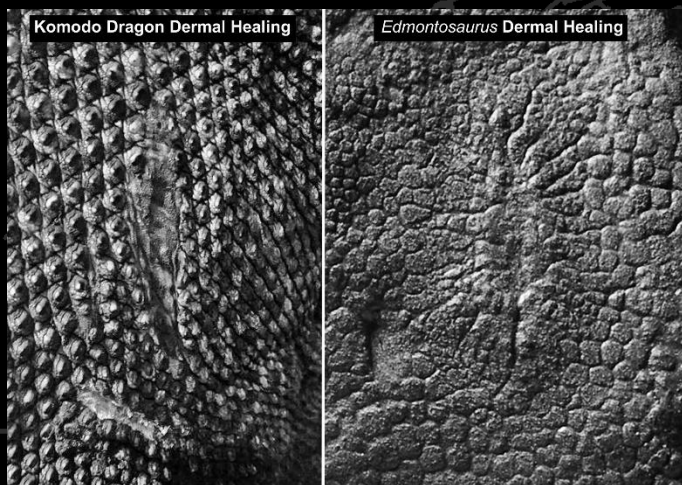
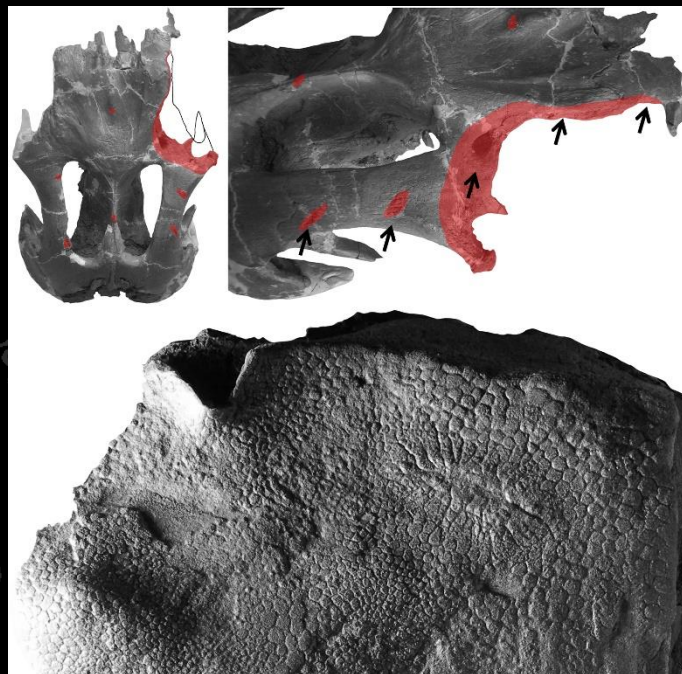
\*Inquire for prices in bronze





# Healed dinosaur skin

Fossil dinosaur skin is rare, but this beautiful piece is the first example of healed dinosaur skin in the fossil record! Recently published in the journal *Cretaceous Research* and featured in TV documentaries such as National Geographic's *Ultimate Dino Survivor*, this specimen is well known and informative. It came from a hadrosaur that bore healed tooth marks, probably from a *T.rex*. Can also be cast in durable rubber "Dragon Skin", so the public can "feel" what a dinosaur's hide was like.



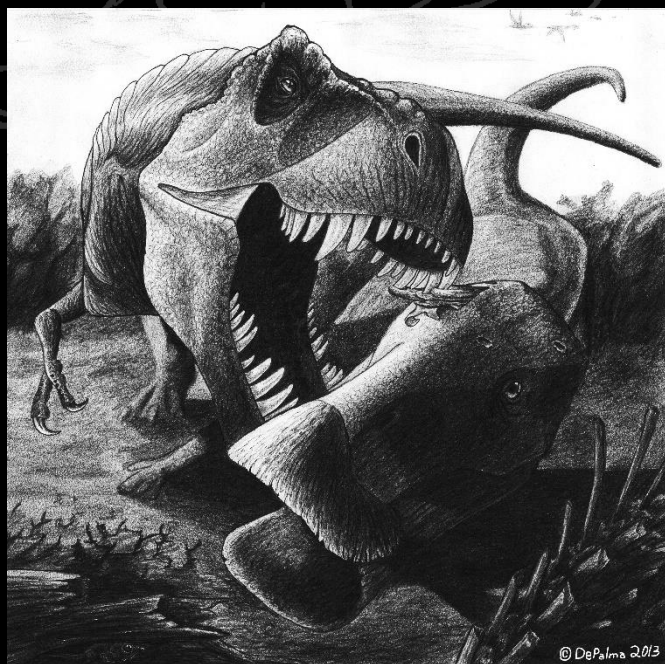
Fossil skin replica, 5 inches long.

21288.....\$250

Replica of healed skull (Available soon)

21289.....\$5,624

\*Inquire for prices in bronze







# Juvenile *Tyrannosaurus rex*

The Tyrant King was not always a giant! This gorgeously detailed and scientifically accurate reconstruction shows what a baby *T.rex* of ~6 to 8 months of age would have looked like. The skeleton was painstakingly crafted based on dinosaur growth rates and theoretical projections, and is our most accurate representation to date of a *T.rex* in this age bracket. The adorable 50 inch long skeleton, nicknamed “Snarly”, shows this fearsome predator at an age not commonly depicted, and would be impressive if displayed next to a skull of an adult *T.rex*. Or, try adding it as an unfortunate food item for another predator such as *Dakotaraptor*!



Mounted skeleton, 50 inches long.

21290.....\$6,450

Skeleton in faux matrix

21291.....\$2,250

\*Inquire for prices in bronze





## *Tyrannosaurus rex* claw

---



A highly detailed claw replica from one of the most iconic predators of North America. Suitable as a hand's-on or display specimen, durable and effective.

Claw, 9 inches along the curve.

21292.....\$45

\*Inquire for prices in bronze



# Mosasaur *Tethysaurus* sp.

Mosasaur is a fearsome example of easily recognizable marine predators, but many do not realize that these evolved from fully terrestrial lizards resembling Komodo Dragons.

*Tethysaurus* was a transitional form, possessing fully functional legs with claws, yet adopting a marine lifestyle. This beautiful *Tethysaurus* skull was acid-prepared from a solid phosphatic block, disassembled, individually molded, and assembled to make a perfect 3D mount. This is a great example of a transitional form that preceded fully marine mosasaurs.



Skull, 12 inches long.

21293.....\$500

\*Inquire for prices in bronze





# Ichthyosaur



While they resemble porpoises in body form, ichthyosaurs were actually a bizarre type of sea-going reptile. This specimen is rather complete, and the body outline was crafted into the matrix to demonstrate what the animal's outline would have looked like.

Skeleton on 6.5 foot long slab.

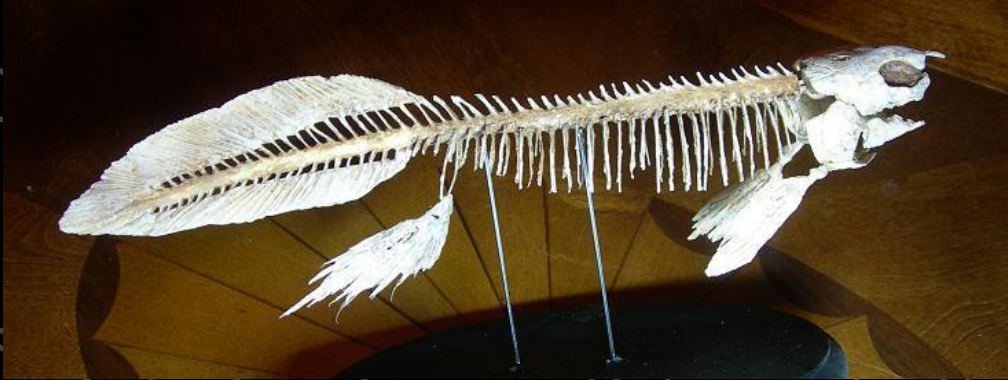
21294.....\$1,200

\*Inquire for prices in bronze



# Lungfish, *Gnathorhiza* sp.

---

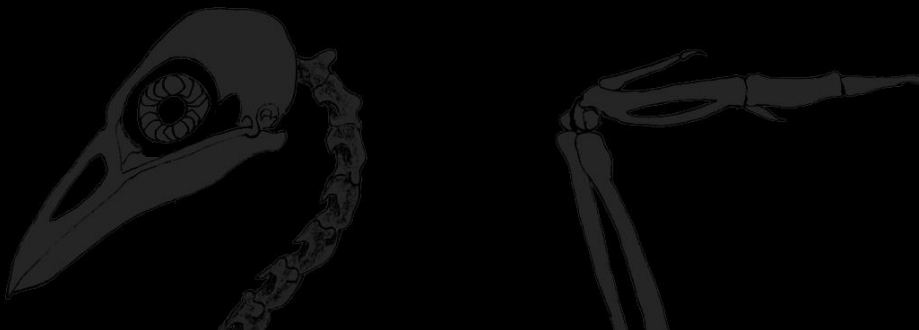


This is a rare and uncommon skeleton of the extinct Permian lungfish *Gnathorhiza*. The original lungfish fossil was preserved within its estivation burrow. Through months of acid preparation, the bones were all removed from matrix, restored, molded, and assembled into the first three-dimensional reconstruction of this creature's skeleton.

Skeleton, 14.5 inches long.

21295.....\$650

\*Inquire for prices in bronze





## Ordering Information

*We are confident that you will be satisfied with your purchases, however, in the event that you are not pleased for any reason, we will make whatever effort we can within the bounds of our policies to ensure your satisfaction. Please read carefully the following information concerning your order. Submitting an order implies that you've read and agree with the policies outlined here.*

**Use of your Personal Information:** The Palm Beach Museum of Natural History will use your personal information solely for the purpose of processing your order. Your information will not be sold or otherwise distributed.

**Disclaimer:** The Museum is not responsible for representational errors concerning merchandise such as typos, or other human error in that may appear in our brochures or promotional material. If you find or suspect any errors, please contact us immediately.

**Merchandise Variation:** We will do our best to accurately represent to you the item you are purchasing. Hand-poured and hand painted replica material may vary slightly in form and color. Product photos do not represent the actual size of merchandise items. Approximate size is given in item description. If you have any questions or concerns about the items you are purchasing, please feel free to contact us.

**Warranty:** Defective merchandise must be reported within 5 days of receipt and the defect will be remedied by repair or replacement.

**Merchandise Availability:** replicas are created only when an order has been placed. We will notify you with an estimated delivery schedule. We will make every effort to meet the estimated shipping time provided. However, items ordered in unanticipated quantities may delay shipment of your order.

**General Policy for all Orders:** All prices are in US dollars. Merchandise will not be shipped until full payment is received unless a signed Sales Agreement is in place outlining a payment schedule.

**Shipping Methods:** Shipping prices are estimated. Actual shipping costs may vary. The following shipping methods will be used: UPS (United Parcel Service), USPS (United States Postal Service), FedEx (Federal Express).

**Special Shipping Charges:** Shipping charges on large orders which cannot be shipped via UPS or US mail, vary considerably. We will not know the actual charges until we are invoiced by the carrier. For these items we will estimate your shipping charges and payment is due prior to shipping. Underpayment or over payment of actual shipping costs will be invoiced or refunded accordingly.

## Payment Methods

**Credit Card:** On-line payments may be made via PayPal through our museum store at <http://www.pbmnh.org/museum-store>.

**We accept MasterCard, Visa, American Express, and Discover Card. Bank Draft/Money Order and Traveler's Checks:** As these are funds guaranteed by the bank, your order will be processed immediately upon receipt of payment. **Personal Checks:** We gladly accept your personal check and will process your order when your check has cleared. **Wire Transfer:** Contact us for routing information.

**Tax:** We are required to charge sales tax on purchases delivered to locations within the state of Florida. For Florida orders, sales tax will automatically be added to your total amount due.

**Deposits:** Payment in full is required when purchasing items valued at less than \$1,000. For any purchase of \$1,000 or more we require a signed Sales Agreement outlining a payment schedule including a nonrefundable deposit equal to 30% of the purchase price to initiate your order. The balance, plus estimated shipping cost is due prior to shipping your order. Underpayment or overpayment of actual shipping costs will be invoiced or refunded accordingly. See Special Shipping Charges above.

**Canceling an Order:** You may cancel your order prior to our shipping it to you. Items which require a deposit may be canceled, but the deposit will not be refunded.

